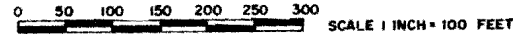


Westwood Estates Sub No 1

PART OF THE S.W. 1/4 SECTION 2, T.10N., R.10E.,
VILLAGE OF BEVERLY HILLS, OAKLAND COUNTY, MICHIGAN

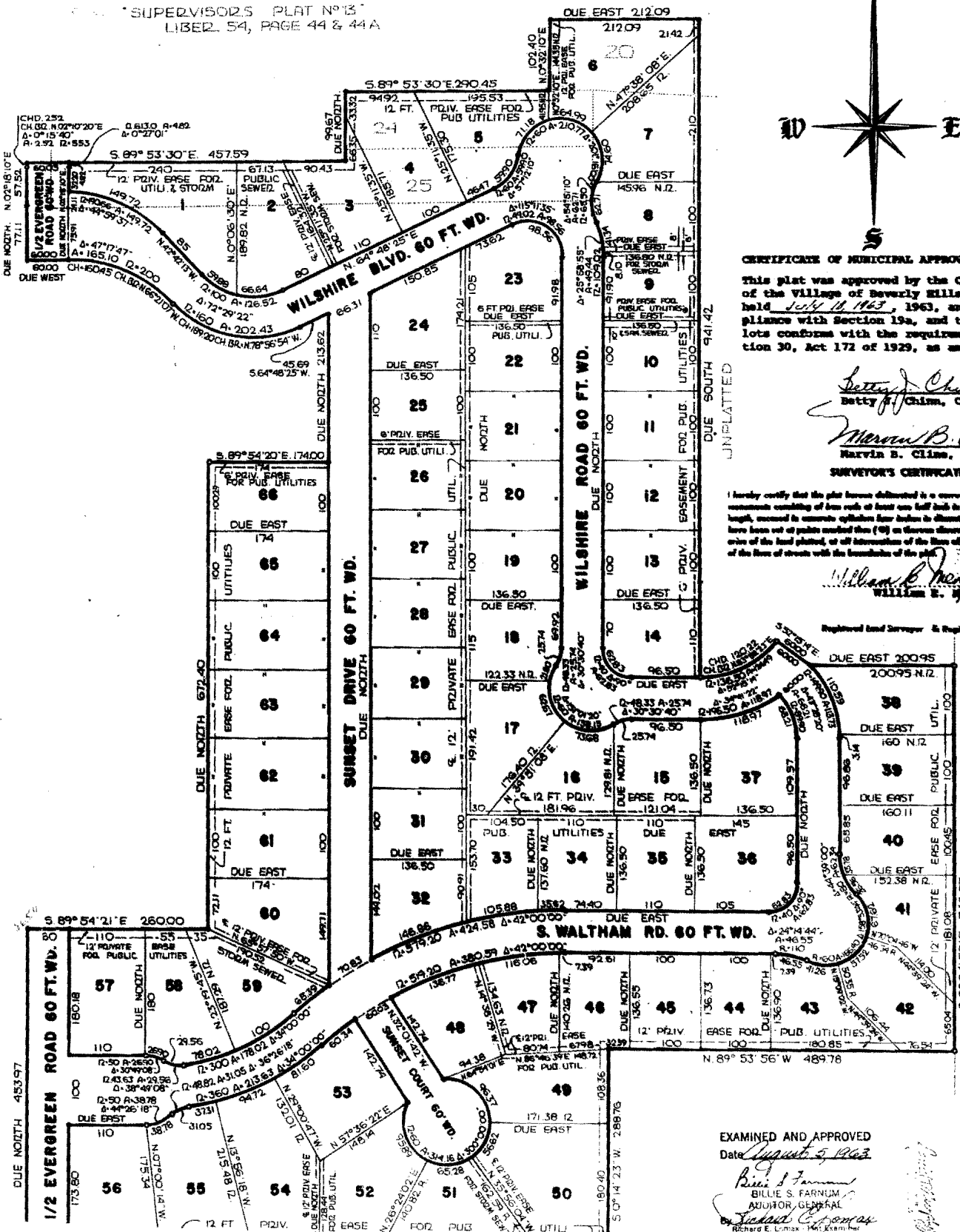
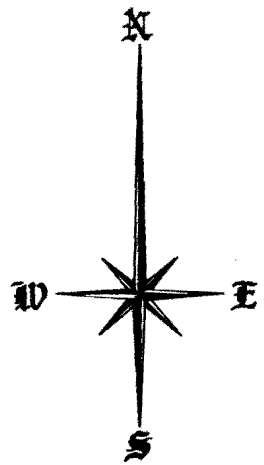


All dimensions are in feet and decimals thereof
All curvilinear dimensions are shown along the arc
R denotes radial N.R. denotes not radial

sheet 1 of 2 sheets

MUNICIPAL CONSULTANT SERVICE
CIVIL ENGINEERING AND SURVEYING
HAZEL PARK, MICHIGAN

"SUPERVISOR'S PLAT No 13"
LIBER. 54, PAGE 44 & 44A



CERTIFICATE OF MUNICIPAL APPROVAL

This plat was approved by the Common Council of the Village of Beverly Hills at a meeting held July 14, 1963, 1963, and is in compliance with Section 15a, and the width of lots conform with the requirements of Section 30, Act 172 of 1929, as amended.

Betty J. Chinn
Betty J. Chinn, Clerk

Marvin B. Chinn
Marvin B. Chinn, President

SURVEYOR'S CERTIFICATE

I hereby certify that the plat herein delineated is a correct one, and that previous measurements consisting of less than or at least one full block in diameter and 300 feet long, were in complete compliance with the provisions of Section 15a, and the width of lots conform with the requirements of Section 30, Act 172 of 1929, as amended.

William E. Spence
William E. Spence
Registered Land Surveyor & Registered Professional Engineer

EXAMINED AND APPROVED
Date August 5, 1963

Billie S. Farnham
Billie S. Farnham
MAYOR, GENERAL

OAKLAND COUNTY MICHIGAN REGISTER OF DEEDS RECORDS
RECORDED
2023 AUG 12 10 01 AM
500004500E34657